



To: Branch Referee-in-Chiefs

Date: August 11th, 2010

From: James Mays, Referee-in-Chief, Hockey Canada

SUBJECT: **2010 Hockey Canada Officiating Procedure Changes**

Please be advised of the following Officiating Procedures changes and modifications which have been approved for immediate use.

These procedures should be instructed in all certification clinics as well as communicated to all supervisors who work with the officials.

Thank you,

A handwritten signature in cursive script, appearing to read "J. Mays".

James Mays

2010 Hockey Canada Officiating Procedure Changes

Both 2 Official and Traditional 3 Official system

1) Linesmen conducting face-offs.

New

“Generally speaking the Linesman who retrieves the puck is the one that conducts the ensuing face-off. Once the Linesman arrives at the face-off location, the other Linesman exits to her face-off position across the ice. Of course common sense prevails in situations where the puck ends up close to the Linesman positioned at the face-off location, the Linesman may retrieve the nearby puck and conduct the face-off himself.”

2) Linesmen procedures for icing.

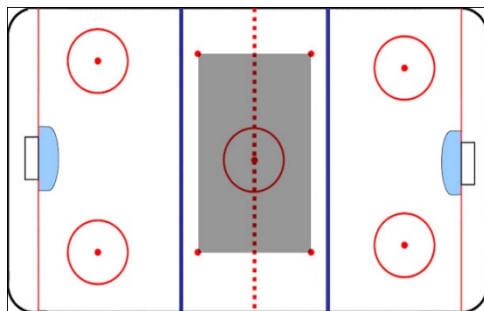
New Wording

“The front Linesman will do one of two things. He will blow his whistle as the puck crosses the goal line or wash out the icing. On icing the front Linesman does not put his arm up after blowing the whistle.”

3) Line Change Procedure –2 official system

New Wording

Official not dropping the puck will conduct the line change procedure in all cases. The Official when conducting the line change procedure is reminded he has the flexibility to position himself so as to present a clear view of the procedure to the benches, conclude the procedure then retreat to his normal face-off position.



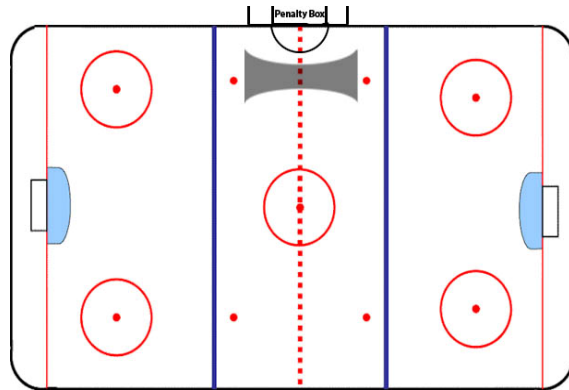
4) Switching ends during the game.

Take any reference to Linesmen switching ends at or near the mid-point of the game out of the Hockey Canada Procedures Manual.

Referee

1) Penalty Procedure – Reporting at Penalty Box (add 3 words to end)

“The Referee must ensure that the off-ice Official has the current information regarding the penalized player before departing the penalty box area. Referees are encouraged to stop and report the penalty, however there should not be any undue delay which could lead to confrontation between the penalized player and the Referee. There may be times when the Referee will want to keep moving and make the stop very short if at all.



2) Line change procedure.

New wording for end zone face-offs.

In an effort to give the benches the best view of the Line Change procedure, the Referee is encouraged to move outward into the end zone face-off circle to conduct the procedure, and then upon completion take up her position at the side of the net.

3) Icing Procedure.

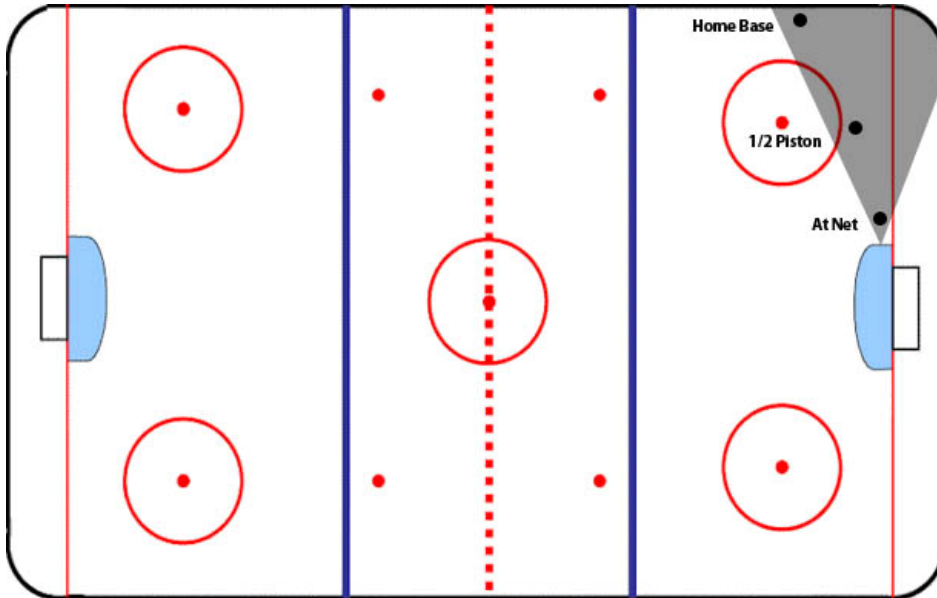
Additional wording

Whenever possible the Referee should get behind all or as many of the players on the ice as possible to follow them up the ice. This will allow the Referee to keep everyone in front of him and allow him to witness any possible or further infractions.

4) End zone positioning.

New wording

The preferred end zone positioning for the Referee or end-zone Official in the 2 Official system is anywhere in the cone (shaded area) in the illustration below.



Although the cone area is below the goal line at certain points, the Referee is encouraged to stay at or above the goal line as much as possible. The Referee is allowed to move away from the shaded area when absolutely necessary but should always try to return.